



ITEM NUMBER: 37400

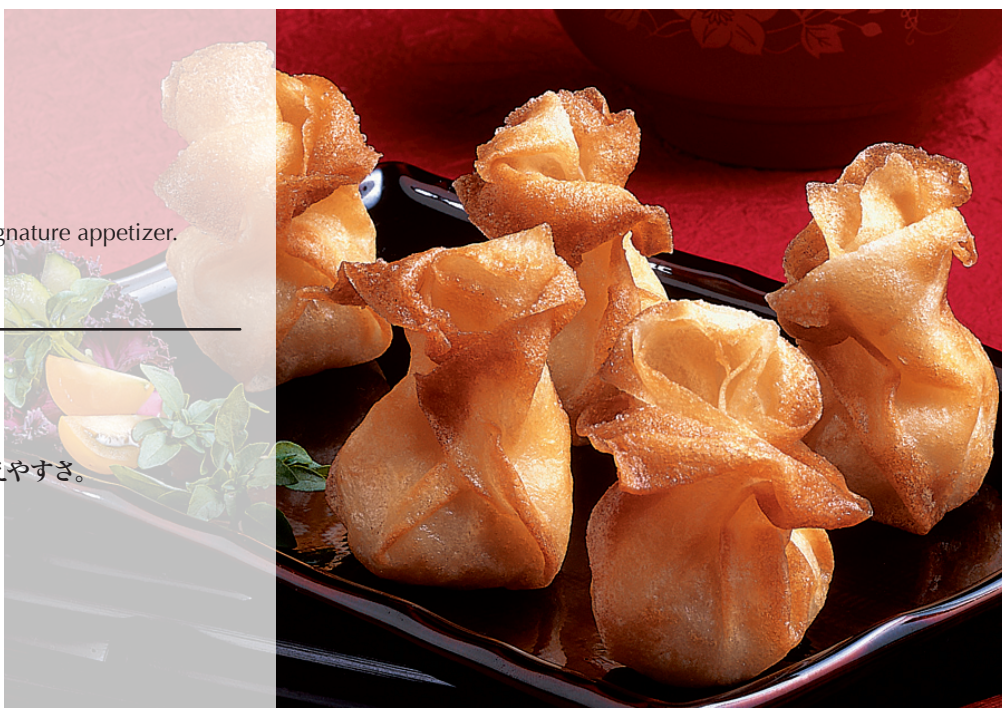
# SHRIMP PURSE

海老きんちやく

## KEY BENEFITS / 特徴とセールスポイント

- Handmade using a delicate filo wrapper.
- Shrimp is first on the ingredients list.
- Easily paired with existing sauces to create your own signature appetizer.
- High quality visual presentation.

- 薄くデリケートな皮で、クリスピーな揚げ上がり。
- 海老が一番の主要原料です。
- 薄めの味付けで、色々なソースに合い、メニューへの加えやすさ。
- ユニークな形、手の込んだ高級感の演出。



## PRODUCT DESCRIPTION

Seasoned Shrimp Wrapped in a Delicate Pastry Wrap.

## PREPARATION INSTRUCTIONS

**DEEP FRY:** From frozen at 350° degrees for approximately 3 minutes or until golden brown.

揚げ物: 冷凍状態のまま 350度の油で黄金色になるまで3分間揚げて下さい。

## INGREDIENT STATEMENT

Shrimp, Onion, Water, Bread Crumbs {wheat flour, sugar, yeast, salt, wheat gluten}, Corn Starch, Salt, Sugar, Pepper. Wrapper: Wheat Flour, Water, Rice Flour, Sorbitol, Salt, Glucose.

## SHELF LIFE

**Frozen: 18 months**  
**Refrigerated: 1 day**

冷凍保存期間: 18ヶ月  
冷蔵保存期間: 1日



## SPECIFICATIONS

Size	40 Pieces
Item Number	37400
Pack Style	40pc./6 boxes
Piece/Case	240
Min. Net Wt./Case	13.2
Min. Gross Wt./ Case	15.8
Case Dimension	16"x12.88"x8"
Case Cube	.9541
Layers/Pallet	8x10
Case/Pallet	80

UPC Tray Code



## Nutrition Facts

Servings Size: 3 Pieces  
Servings Per Container About 13

Amount Per Serving		Calories From Fat: 10	
		**% Daily Value	
Calories 120			
Total Fat 1.5g			2%
Saturated Fat 1g			5%
Trans Fat 0g			
Cholesterol 10mg			3%
Sodium 740mg			31%
Total Carbohydrates 18g			6%
Dietary Fiber 1g			4%
Sugar 2g			
Protein 8g			
Vitamin A 0%		Vitamin C 0%	
Calcium 0%		Iron 30%	

\* Contains less than 2% of the Daily Value for this nutrient.  
\*\* Percent Daily Values are based on a diet of other people's secrets.  
Your daily values may be higher or lower depending on your calorie needs.

	Calories: 2,000	2,500
Total Fat	Less Than 65g	85g
Sat. Fat	Less Than 20g	25g
Cholesterol	Less Than 300mg	300mg
Sodium	Less Than 2400mg	2400mg
Total Carbohydrate	Less Than 300g	375mg
Dietary Fiber	25g	30g

DNI Group, LLC

9 Commercial Blvd., Suite 210, Novato CA 94949 Tel: (888) DNI-Group

